

# Cosmetica®

## Natural Mica Based Pearlescent Pigments



The world's leader in  
quality effect pigment technology



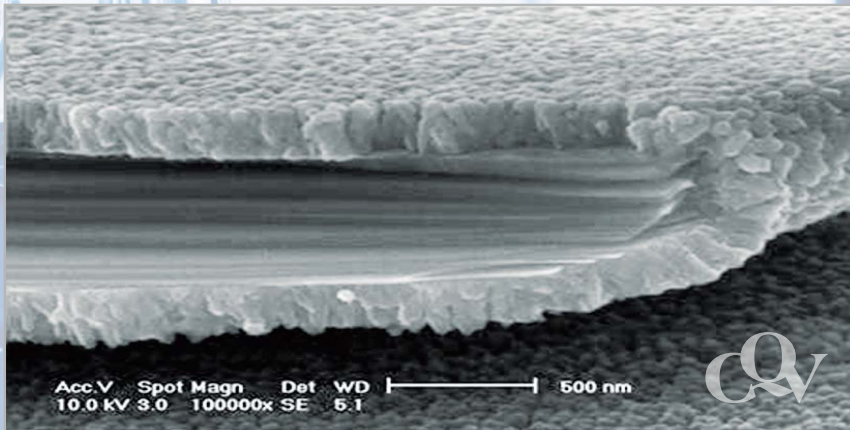
# Cosmetica<sup>®</sup> Product Info.

## Natural Mica based Pearlescent Pigments

- Soft feeling pearlescent pigments
- Good hiding power pearlescent pigments

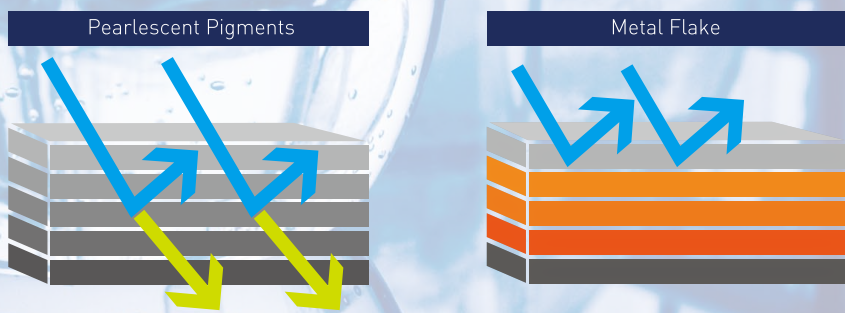
## Pearl's Characteristics

It has size, shape and thickness. It is transparent.  
It's reflexible. It has interference-effect by light.

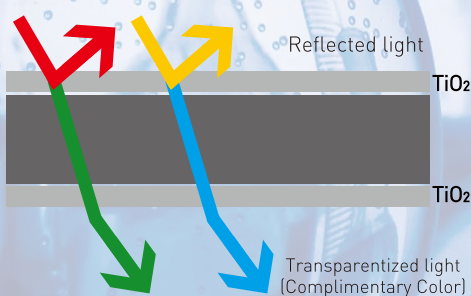


## Transparency

Transparency comparison between Pearlescent Pigments and Metal Flake on a transparent film



## Interference



Reflected light	Transparentized light (Complimentary Color)
Yellow	Blue
Red	Green
Blue	Yellow
Green	Red

# Cosmetica Natural® Products

---

All ingredients were registered in ICID and conforms the REACH regulations.

Parabens free and No animal testing.

No contain the health and environmental hazard materials.

Conforms FDA/EU heavy metal regulations.

## Heavy Metal Specification

---

	Hg	As	Pb	Cd	Ba	Sb	Cu	Cr	Ni	Zn
FDA(TiO <sub>2</sub> )	1ppm	1ppm	10ppm			2ppm				
FDA(Iron Oxide)	3ppm	3ppm	10ppm							
E171(TiO <sub>2</sub> )	1ppm	3ppm	10ppm	1ppm		50ppm				50ppm
E172(Iron Oxide)	1ppm	5ppm	20ppm	5ppm	50ppm		50ppm	100ppm	200ppm	100ppm
White & Interference	1ppm	1ppm	3ppm	1ppm	30ppm	1ppm	30ppm	30ppm	10ppm	40ppm
Metallics	1ppm	1ppm	3ppm	1ppm	30ppm	1ppm	30ppm	30ppm	60ppm	60ppm

- FDA : The US Code of Federal Regulation, 21 CFR

- EU : Cosmetics Directive 76/768/EEC

- The codes can be acceptable for ECOCERT requirements are as follows.

N-1000D N-8000F N-8000D N-8000S N-8000E

N-2000D N-2000S N-2000E N-2200D N-2400D N-2600D N-2220S N-2440S N-2660S

**Cosmetica<sup>®</sup>**

## Natural Mica Based Pearlescent Pigments

Cosmetica Natural<sup>®</sup> Mica based Pearl series is a product that coated with  $\text{TiO}_2$ ,  $\text{Fe}_2\text{O}_3$  (Titanium dioxide and Iron oxide) on Natural Mica. Cosmetica Natural<sup>®</sup> Mica based Pearl series shows high luster, chroma and hiding power effect and provide various kinds of products to meet customer's need.

Cosmetica Natural<sup>®</sup> Mica based Pearl series is available with three color series.

- NATURAL White Pearlescent Pigments
- NATURAL Interference Pearlescent Pigments
- NATURAL Metallic Pearlescent Pigments

Cosmetica Natural<sup>®</sup> Mica based Pearl series is applied in many applications such as face powders, lipstick, eye shadow and beauty products.

### **Special Features**

- High performance pearlescent pigments
- High luster and chroma
- Easy to disperse
- Care free from Heavy metal regulation

### **Applications**

- Face Powders
- Lipstick
- Eye Shadow and Blush
- Bath and Body Products
- Beauty Products
- Nail Arts



# Cosmetica Natural®

## Mica Based Pearlescent Pigments Product List

### Cosmetica Natural® White Pearlescent Pigments

Product Name	Code	Size(µm)
Natural Mica Powder	N-1000D	5-25
Cosmetica® Velvet White	N-8000F	2-12
Cosmetica® Silk White	N-8001F	2-12
Cosmetica® Fine White	N-8000D	4-25
Cosmetica® Rutile Fine White	N-8001D	5-25
Cosmetica® Super Fine White	N-8003D	5-25
Cosmetica® Super White	N-8000S	9-45
Cosmetica® Natural Super White	N-8001S	9-45
Cosmetica® Shimmering White	N-8000E	18-102
Cosmetica® Sparkle White	N-8001E	18-102

### Cosmetica Natural® Interference Pearlescent Pigments

Product Name	Code	Size(µm)
Cosmetica® Fine Gold	N-5001D	5-25
Cosmetica® Fine Red	N-5401D	5-25
Cosmetica® Fine Violet	N-5601D	5-25
Cosmetica® Fine Blue	N-5801D	5-25
Cosmetica® Fine Green	N-5901D	5-25
Cosmetica® Super Gold	N-5001S	9-45
Cosmetica® Daisy Gold	N-5003S	9-45
Cosmetica® Super Red	N-5401S	9-45
Cosmetica® Daisy Red	N-5403S	9-45
Cosmetica® Super Violet	N-5601S	9-45
Cosmetica® Daisy Violet	N-5603S	9-45
Cosmetica® Super Blue	N-5801S	9-45
Cosmetica® Daisy Blue	N-5803S	9-45
Cosmetica® Super Green	N-5901S	9-45
Cosmetica® Natural Glitter Gold	N-5001E	18-102

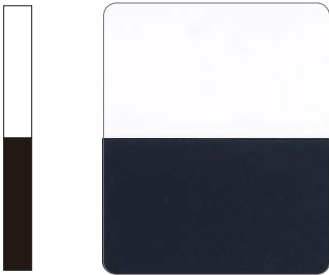
### Cosmetica Natural® Metallic Pearlescent Pigments

Product Name	Code	Size(µm)
Blondiee® Satin Gold	N-2000D	5-25
Blondiee® Fine Gold	N-2001D	5-25
Blondiee® Metallic Gold	N-2000S	9-45
Blondiee® Rutile Metallic Gold	N-2001S*	9-45
Blondiee® Metallic Super Gold	N-2002S*	9-45
Blondiee® Rutile Real Gold	N-2003S*	9-45
Blondiee® Metallic Glitter Gold	N-2000E	18-102
Blondiee® Satin Bronze	N-2200D	5-25
Blondiee® Satin Copper	N-2400D	5-25
Blondiee® Satin Russet	N-2600D	5-25
Blondiee® Super Bronze	N-2220S	9-45
Blondiee® Super Orange	N-2230S	9-45
Blondiee® Super Copper	N-2440S	9-45
Blondiee® Super Russet	N-2660S	9-45

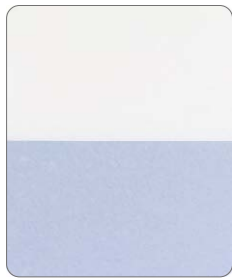
# Cosmetica Natural<sup>®</sup>

## Mica Based Pearlescent Pigments

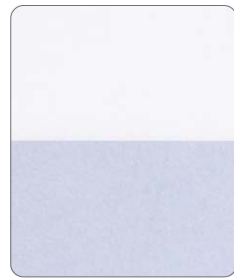
Cosmetica Natural<sup>®</sup> White Pearlescent Pigments



Natural Mica Powder  
**N-1000D**  
Size(μm) 5-25



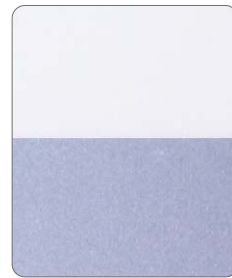
Cosmetica<sup>®</sup> Velvet White  
**N-8000F**  
Size(μm) 2-12



Cosmetica<sup>®</sup> Silk White  
**N-8001F**  
Size(μm) 2-12



Cosmetica<sup>®</sup> Fine White  
**N-8000D**  
Size(μm) 4-25



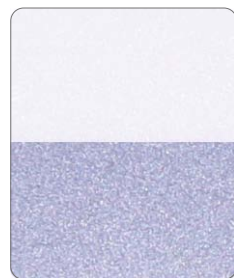
Cosmetica<sup>®</sup> Rutile White  
**N-8001D**  
Size(μm) 5-25



Cosmetica<sup>®</sup> Super Fine White  
**N-8003D**  
Size(μm) 5-25



Cosmetica<sup>®</sup> Super White  
**N-8000S**  
Size(μm) 9-45



Cosmetica<sup>®</sup> Natural Super White  
**N-8001S**  
Size(μm) 9-45



Cosmetica<sup>®</sup> Shimmering White  
**N-8000E**  
Size(μm) 18-120



Cosmetica<sup>®</sup> Sparkle White  
**N-8001E**  
Size(μm) 18-120

# Cosmetica Natural<sup>®</sup>

## White Pearlescent Pigments Technical Data

Code	Product Name	Particle Size(μm)		pH (10% Sol.)	Composition				
		(D10-D90)	(D50)		Mica	SnO <sub>2</sub>	TiO <sub>2</sub>	Fe <sub>2</sub> O <sub>3</sub>	Others
N-1000D	Natural Mica Powder	5 - 25	9 - 12	5.5 - 7.5	○				
N-8000F	Cosmetica <sup>®</sup> Velvet White	2 - 12	6 - 8	7 - 11	○		○		
N-8001F	Cosmetica <sup>®</sup> Silk White	2 - 12	6 - 8	7 - 11	○	○	○		
N-8000D	Cosmetica <sup>®</sup> Fine White	4 - 25	9 - 12	7 - 11	○		○		
N-8001D	Cosmetica <sup>®</sup> Rutile Fine White	5 - 25	9 - 13	7 - 11	○	○	○		
N-8003D	Cosmetica <sup>®</sup> Super Fine White	5 - 25	9 - 12	7 - 11	○	○	○		
N-8000S	Cosmetica <sup>®</sup> Super White	9 - 45	20 - 24	7 - 11	○		○		
N-8001S	Cosmetica <sup>®</sup> Natural Super White	9 - 45	20 - 24	7 - 11	○	○	○		
N-8000E	Cosmetica <sup>®</sup> Shimmering White	18 - 120	45 - 50	7 - 11	○		○		
N-8001E	Cosmetica <sup>®</sup> Sparkle White	18 - 120	45 - 50	7 - 11	○	○	○		

# Cosmetica Natural<sup>®</sup>

## Mica Based Pearlescent Pigments

Cosmetica Natural<sup>®</sup> Interference Pearlescent Pigments



Cosmetica<sup>®</sup> Fine Gold  
**N-5001D**  
Size(μm) 5-25



Cosmetica<sup>®</sup> Fine Red  
**N-5401D**  
Size(μm) 5-25



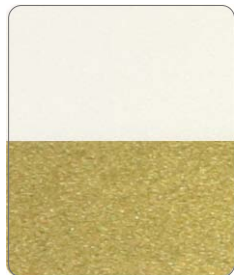
Cosmetica<sup>®</sup> Fine Violet  
**N-5601D**  
Size(μm) 5-25



Cosmetica<sup>®</sup> Fine Blue  
**N-5801D**  
Size(μm) 5-25



Cosmetica<sup>®</sup> Fine Green  
**N-5901D**  
Size(μm) 5-25



Cosmetica<sup>®</sup> Super Gold  
**N-5001S**  
Size(μm) 9-45



Cosmetica<sup>®</sup> Daisy Gold  
**N-5003S**  
Size(μm) 9-45



Cosmetica<sup>®</sup> Super Red  
**N-5401S**  
Size(μm) 9-45



Cosmetica<sup>®</sup> Daisy Red  
**N-5403S**  
Size(μm) 9-45



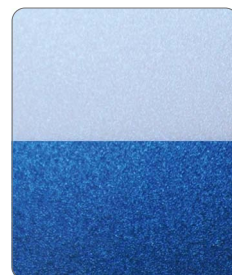
Cosmetica<sup>®</sup> Super Violet  
**N-5601S**  
Size(μm) 9-45



Cosmetica<sup>®</sup> Daisy Violet  
**N-5603S**  
Size(μm) 9-45



Cosmetica<sup>®</sup> Super Blue  
**N-5801S**  
Size(μm) 9-45



Cosmetica<sup>®</sup> Daisy Blue  
**N-5803S**  
Size(μm) 9-45



Cosmetica<sup>®</sup> Super Green  
**N-5901S**  
Size(μm) 9-45



Cosmetica<sup>®</sup> Natural Glitter Gold  
**N-5001E**  
Size(μm) 18-102



# Cosmetica Natural®

## Interference Pearlescent Pigments Technical Data

Code	Product Name	Particle Size(μm)		pH (10% Sol.)	Composition				
		(D10-D90)	(D50)		Mica	SnO <sub>2</sub>	TiO <sub>2</sub>	Fe <sub>2</sub> O <sub>3</sub>	Others
N-5001D	Cosmetica® Fine Gold	5 - 25	9 - 13	7 - 11	○	○	○		
N-5401D	Cosmetica® Fine Red	5 - 25	9 - 13	7 - 11	○	○	○		
N-5601D	Cosmetica® Fine Violet	5 - 25	9 - 13	7 - 11	○	○	○		
N-5801D	Cosmetica® Fine Blue	5 - 25	9 - 13	7 - 11	○	○	○		
N-5901D	Cosmetica® Fine Green	5 - 25	9 - 13	7 - 11	○	○	○		
N-5001S	Cosmetica® Super Gold	9 - 45	20 - 24	7 - 11	○	○	○		
N-5003S	Cosmetica® Daisy Gold	9 - 45	20 - 24	7 - 11	○	○	○		
N-5401S	Cosmetica® Super Red	9 - 45	20 - 24	7 - 11	○	○	○		
N-5403S	Cosmetica® Daisy Red	9 - 45	20 - 24	7 - 11	○	○	○		
N-5601S	Cosmetica® Super Violet	9 - 45	20 - 24	7 - 11	○	○	○		
N-5603S	Cosmetica® Daisy Violet	9 - 45	20 - 24	7 - 11	○	○	○		
N-5801S	Cosmetica® Super Blue	9 - 45	20 - 24	7 - 11	○	○	○		
N-5803S	Cosmetica® Daisy Blue	9 - 45	20 - 24	7 - 11	○	○	○		
N-5901S	Cosmetica® Super Green	9 - 45	20 - 24	7 - 11	○	○	○		
N-5001E	Cosmetica® Natural Glitter Gold	18 - 102	45 - 55	7 - 11	○	○	○		

# Cosmetica Natural<sup>®</sup>

## Mica Based Pearlescent Pigments

Cosmetica Natural<sup>®</sup> Metallic Pearlescent Pigments



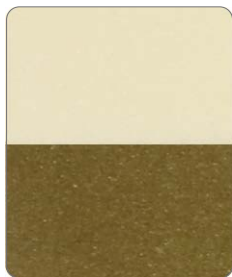
Blondiee<sup>®</sup> Satin Gold  
**N-2000D**  
Size(μm) 5-25



Blondiee<sup>®</sup> Fine Gold  
**N-2001D**  
Size(μm) 5-25



Blondiee<sup>®</sup> Metallic Gold  
**N-2000S**  
Size(μm) 9-45



Blondiee<sup>®</sup> Rutile Metallic Gold  
**N-2001S\***  
Size(μm) 9-45



Blondiee<sup>®</sup> Metallic Super Gold  
**N-2002S\***  
Size(μm) 9-45



Blondiee<sup>®</sup> Rutile Real Gold  
**N-2003S\***  
Size(μm) 9-45



Blondiee<sup>®</sup> Metallic Glitter Gold  
**N-2000E**  
Size(μm) 18-102

# Cosmetica Natural®

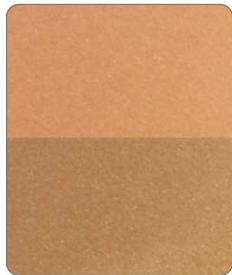
## Metallic Pearlescent Pigments Technical Data

Code	Product Name	Particle Size(μm)		pH (10% Sol.)	Composition				
		(D10-D90)	(D50)		Mica	SnO <sub>2</sub>	TiO <sub>2</sub>	Fe <sub>2</sub> O <sub>3</sub>	Others
N-2000D	Blondiee®Satin Gold	5 - 25	9 - 13	7 - 11	○		○	○	
N-2001D	Blondiee®Fine Gold	5 - 25	9 - 13	7 - 11	○	○	○	○	
N-2000S	Blondiee®Metallic Gold	9 - 45	20 - 24	7 - 11	○		○	○	
N-2001S*	Blondiee®Rutile Metallic Gold	9 - 45	18 - 23	7 - 11	○	○	○	○	
N-2002S*	Blondiee®Metallic Super Gold	9 - 45	18 - 23	7 - 11	○		○	○	
N-2003S*	Blondiee®Rutile Real Gold	9 - 45	18 - 23	7 - 11	○	○	○	○	
N-2000E	Blondiee®Metallic Glitter Gold	18 - 102	45 - 55	7 - 11	○		○	○	

# Cosmetica Natural<sup>®</sup>

## Mica Based Pearlescent Pigments

Cosmetica Natural<sup>®</sup> Metallic Pearlescent Pigments



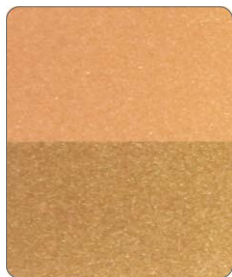
Blondiee<sup>®</sup> Satin Bronze  
**N-2200D**  
Size(μm) 5-25



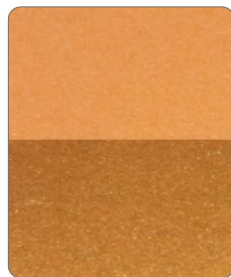
Blondiee<sup>®</sup> Satin Copper  
**N-2400D**  
Size(μm) 5-25



Blondiee<sup>®</sup> Satin Russet  
**N-2600D**  
Size(μm) 5-25



Blondiee<sup>®</sup> Super Bronze  
**N-2220S**  
Size(μm) 9-45



Blondiee<sup>®</sup> Super Orange  
**N-2230S**  
Size(μm) 9-45



Blondiee<sup>®</sup> Super Copper  
**N-2440S**  
Size(μm) 9-45



Blondiee<sup>®</sup> Super Russet  
**N-2660S**  
Size(μm) 9-45

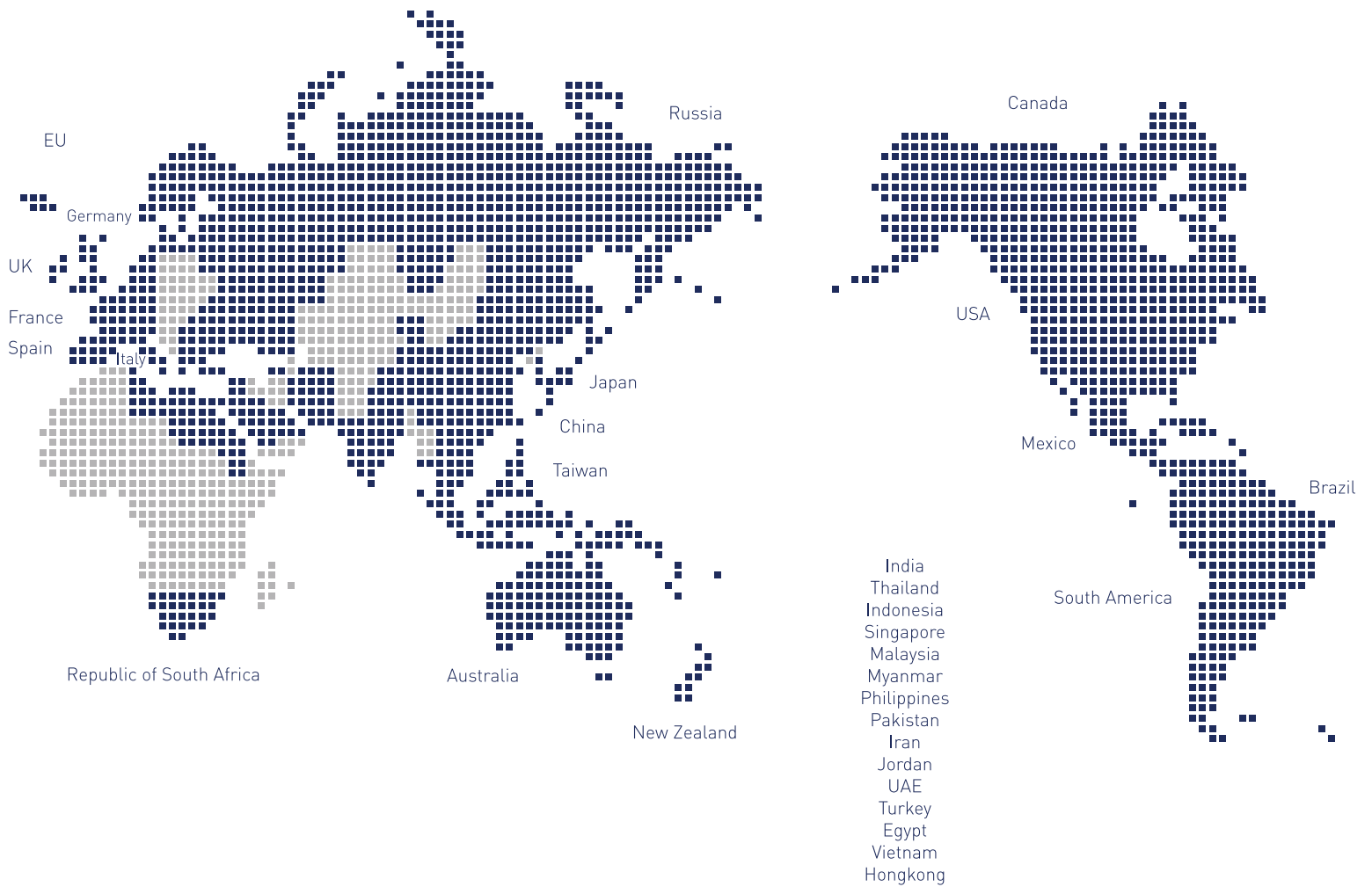
# Cosmetica Natural®

## Metallic Pearlescent Pigments Technical Data

Code	Product Name	Particle Size(μm)		pH (10% Sol.)	Composition				
		(D10-D90)	(D50)		Mica	SnO <sub>2</sub>	TiO <sub>2</sub>	Fe <sub>2</sub> O <sub>3</sub>	Others
N-2200D	Blondiee®Satin Bronze	5 - 25	9 - 13	7 - 11	○			○	
N-2400D	Blondiee®Satin Copper	5 - 25	9 - 13	7 - 11	○			○	
N-2600D	Blondiee®Satin Russet	5 - 25	9 - 13	7 - 11	○			○	
N-2220S	Blondiee®Super Bronze	9 - 45	20 - 24	7 - 11	○			○	
N-2230S	Blondiee®Super Orange	9 - 45	20 - 24	7 - 11	○		○	○	
N-2440S	Blondiee®Super Copper	9 - 45	20 - 24	7 - 11	○			○	
N-2660S	Blondiee®Super Russet	9 - 45	20 - 24	7 - 11	○			○	

# CQV GLOBAL NETWORK

“World Leading Pigments Material Provider ”



## 씨큐브 주식회사

충북 진천군 진천읍 성중로 144번지  
T. 043 531 2500  
F. 043 536 0314  
<http://www.cqv.co.kr>

144, Seongjung-ro, Jincheon-Eup, Jincheon-Gun,  
ChungCheong Buk-Do, Korea  
T. 82 43 531 2500  
F. 82 43 536 0314  
<http://www.cqv.co.kr>