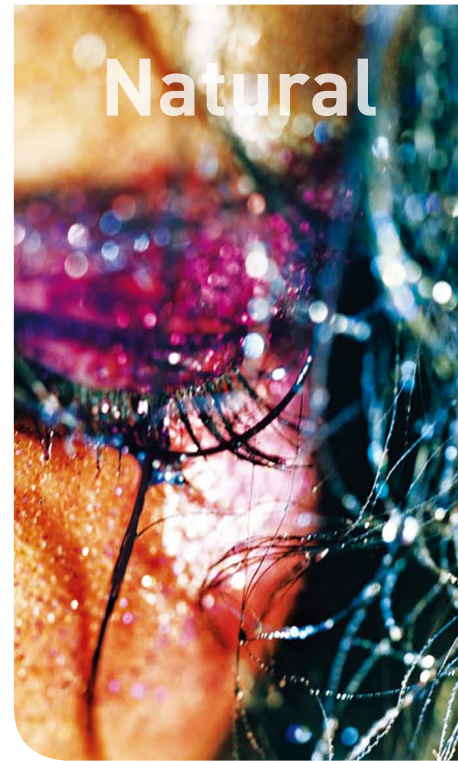


Skolor[®]

Natural Pearlescent Pigments



The world's leader in
quality effect pigment technology



Skolor[®]

Product Info.

Brand of Substrate

- NMP(Natural Mica based Pearl) Series : SKOLOR NATURAL
- BBP(Borosilicate Based Pearl) : SKOLOR GLARE

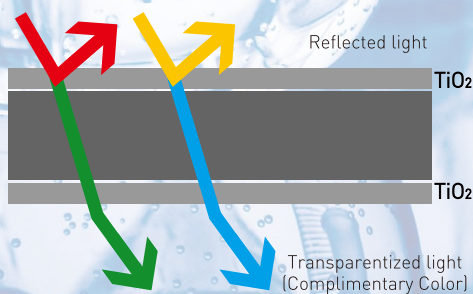
Coated Pigments Line

- Only Red(Carmine) coating Product
- Red(Carmine) and Red(Iron Oxide) coating Product
- Red(Carmine) and Blue(Ferric Ferrocyanide) coating Product
- Only Blue(Ferric Ferrocyanide) coating Product
- Red(Iron Oxide) and Blue(Ferric Ferrocyanide) coating Product
- Only Black(Titanium Black, Iron Oxide Black) coating Product

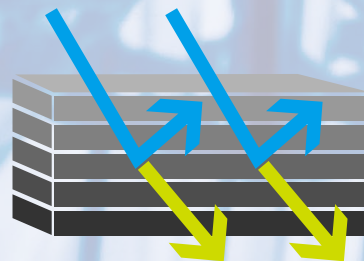
Feature

Transparency comparison between Pearl Effect Pigments and Colored Pearl Effect Pigments

Interference Effect Pigments



Colored Effect Pigments



Particle Size Distribution & Effect

FRACTION	SIZE(micrometer)	LUSTER	FEATURE
S	8 - 50 μ m	Shimmering Luster	Medium Hiding Power

Heavy Metal Specification

	Hg	As	Pb	Cd	Ba	Sb	Cu	Cr	Ni	Zn
FDA(TiO ₂)	1ppm	1ppm	10ppm			2ppm				
FDA(Iron Oxide)	3ppm	3ppm	10ppm							
E171(TiO ₂)	1ppm	3ppm	10ppm	1ppm		50ppm				50ppm
E172(Iron Oxide)	1ppm	5ppm	20ppm	5ppm	50ppm		50ppm	100ppm	200ppm	100ppm
SKOLOR	1ppm	1ppm	3ppm	1ppm	30ppm	1ppm	30ppm	30ppm	50ppm	40ppm

- FDA : The US Code of Federal Regulation, 21 CFR
- EU : Commission Directive 95/45/EC

Skolor[®] Natural

Pearlescent Pigments

Skolor[®] Natural products are coated with absorption pigments on natural mica pearlescent effect pigments.

Skolor[®] Natural products have the pre-existing interference color in natural mica pearlescent effect pigments and the absorption color coated, offering the improved clearer colors and good feeling. And the color tone of the Skolor[®] Natural products is increased by absorption color pigments and interference color. In addition, Skolor[®] Natural products have the soft feeling and excellent hiding power when applied the cosmetics.

Skolor[®] Natural products offer the strong color in appearance by coated absorption pigments and need not mechanical dispersion process because absorbing pigments are already dispersed. Therefore, you can save the time and money.

By using Skolor[®] Natural products, you can create the unique colors in the various make-up products.

Special Features

- Brilliant chroma pearlescent effect pigments based natural pearlescent effect pigments
- Multi-color effect pigments
- Easy dispersion
- Variable color
- Easy application

Applications

- Face powder
- Lipstick
- Bath and body products
- Foundations
- Eye shadow and blush
- Beauty products



Skolor[®]Natural

Pearlescent Pigments Product List

Skolor[®]Natural Series

Product Name	Code	Size (µm)
Skolor [®] Camellia Red	SN-5441S	8-50
Skolor [®] Rose Red	SN-5443S	8-50
Skolor [®] Camellia Duplex R/B	SN-5841S	8-50
Skolor [®] Daisy Red	SN-5445S	8-50
Skolor [®] Sage Violet	SN-5643S	8-50
Skolor [®] Anamone Deep Violet	SN-5661S	8-50
Skolor [®] Pansy Deep Blue Pearl	SN-5883S	8-50
Skolor [®] Pansy Blue	SN-5887S	8-50
Skolor [®] Lavandula Blue	SN-5889S	8-50
Skolor [®] Rosemary Green	SN-5981S	8-50
Skolor [®] Mint Green	SN-5993S	8-50
Skolor [®] Snow Silver	SN-8010S	8-50
Skolor [®] Natural Onyx Black	SN-1010S	8-50

Skolor® Natural

Pearlescent Pigments

Skolor® Natural Series



Skolor® Camellia Red
SN-5441S
Size(μm)8-50



Skolor® Rose Red
SN-5443S
Size(μm)8-50



Skolor® Camellia Duplex R/B
SN-5841S
Size(μm)8-50



Skolor® Daisy Red
SN-5445S
Size(μm)8-50



Skolor® Sage Violet
SN-5643S
Size(μm)8-50



Skolor® Anamone Deep Violet
SN-5661S
Size(μm)8-50



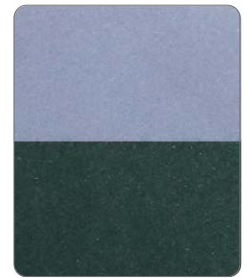
Skolor® Pansy Deep Blue Pearl
SN-5883S
Size(μm)8-50



Skolor® Pansy Blue
SN-5887S
Size(μm)8-50



Skolor® Lavandula Blue
SN-5889S
Size(μm)8-50



Skolor® Rosemary Green
SN-5981S
Size(μm)8-50



Skolor® Mint Green
SN-5993S
Size(μm)8-50



Skolor® Snow Silver
SN-8010S
Size(μm)8-50



Skolor® Natural Onyx Black
SN-1010S
Size(μm)8-50

Skolor® Natural

Pearlescent Pigments Technical Data

Code	Product Name	Particle Size(µm) (D10-D90)	Particle Size(µm) (D50)	pH (10% Sol.)	Composition							
					Mica	SnO ₂	TiO ₂	Carmine (CI 75470)	Iron Oxide (CI 77491)	Ferric Ferrocyanide (CI 77510)	Iron Oxide Black (CI 77499)	Titan Black
SN-5441S	Skolor® Camellia Red	8 - 50	20 - 24	4 - 8	○	○	○	○				
SN-5443S	Skolor® Rose Red	8 - 50	20 - 24	4 - 8	○	○	○	○				
SN-5841S	Skolor® Camellia Duplex R/B	8 - 50	20 - 24	4 - 8	○	○	○	○				
SN-5445S	Skolor® Daisy Red	8 - 50	20 - 24	4 - 8	○	○	○	○	○			
SN-5643S	Skolor® Sage Violet	8 - 50	20 - 24	4 - 8	○	○	○	○	○			
SN-5661S	Skolor® Anamone Deep Violet	8 - 50	20 - 24	4 - 8	○	○	○	○		○		
SN-5883S	Skolor® Pansy Deep Blue Pearl	8 - 50	20 - 24	4 - 7	○	○	○			○		
SN-5887S	Skolor® Pansy Blue	8 - 50	20 - 24	3 - 7	○	○	○			○		
SN-5889S	Skolor® Lavandula Blue	8 - 50	20 - 24	3 - 7	○	○	○			○		
SN-5981S	Skolor® Rosemary Green	8 - 50	20 - 24	3 - 7	○	○	○			○		
SN-5993S	Skolor® Mint Green	8 - 50	20 - 24	3 - 7	○	○	○		○	○		
SN-8010S	Skolor® Snow Silver	8 - 50	20 - 24	6 - 10	○		○					○
SN-1010S	Skolor® Natural Onyx Black	8 - 50	20 - 24	7 - 11	○		○				○	

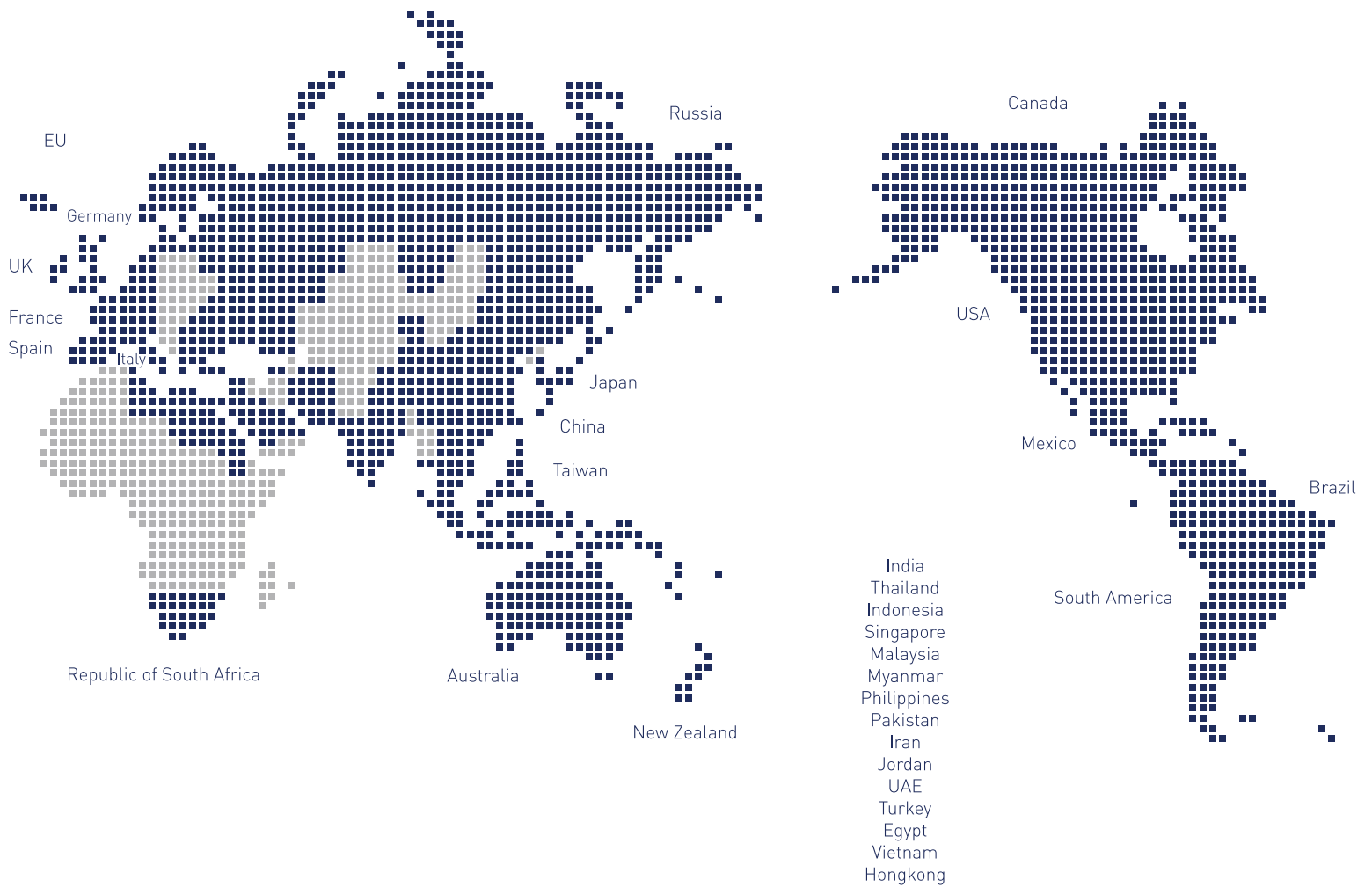
■ Carmine(CI No. 75470) is partially soluble above pH 7 and unstable under high temperature.

Therefore this product should not be heated above 110°C (212°F)

■ Ferric ferrocyanide(CI No. 77510) is unstable to alkali and some salts. Therefore this product should not be used in alkaline formulations

CQV GLOBAL NETWORK

“World Leading Pigments Material Provider ”



Creation of Quality Value

씨큐브 주식회사

충북 진천군 진천읍 성중로 144번지

T. 043 531 2500

F. 043 536 0314

<http://www.cqv.co.kr>

144, Seongjung-ro, Jincheon-Eup, Jincheon-Gun,
ChungCheong Buk-Do, Korea

T. 82 43 531 2500

F. 82 43 536 0314

<http://www.cqv.co.kr>